

Password Generator by Pi Rules

Program Name - Password Generator

Author - Josh (Pi rules)

Latest Version - 1.0.2

Date of release – January 11, 2008

Website - Website - <http://www.pirules.net/programs/pwgen/index.html>

E-mail - pirules3.14+pwgen <at> gmail.com

Table of Contents

Introduction:.....	1
How does this program work?.....	1
Requirements	1
How should I pick the site’s identifier and code?	2
Identifier:	2
Code:	2
How do I install the program?	2
Using the program	5
Advanced Features.....	5

Introduction:

Many people today have accounts at many different websites for banking, shopping online, e-mail, news, etc. It can be difficult to memorize a different password for each one, so people often use only one or two simple passwords for everything. However, this is not a good idea since the password is often insecure and if it is cracked once, all of your accounts are vulnerable. This program can help increase the security of your accounts by generating complex passwords to use instead.

How does this program work?

This program in its most basic use requires two inputs: some identifier of the website and a “code.” It uses a hash function, which calculates a shorter, fixed-length representation of an original value. The program then uses this hash function and converts the output to characters on a standard English keyboard. It does not show you the password to avoid the possibility for somebody looking at it over your shoulder, but instead places on the Clipboard so you can paste it into the online form.

Requirements

Operating System - Windows 98 or newer. Compatible with 32 and 64-bit versions

Software - .NET Framework 2.0 ([32-bit download](#)) ([64-bit download](#))

Hardware - Anything that runs an operating system listed above should work

How should I pick the site's identifier and code?

Before I begin, I must mention that **you must remember the identifier and code** because you will probably have to regenerate the password at some time in the future.

Identifier:

The identifier should be unique to the site and you absolutely must remember how you chose it. The example given is a domain, such as microsoft.com. To make it harder for another person to use the program and regenerate the result, you might want to make it more unique. Even adding a simple letter, such as the first letter of your first name before the domain would make it more secure if nobody knows that you did it. You might also want to use the full URL from the login page. The possibilities are endless, but, again, remember what the identifier is, and keep it secret!

Code:

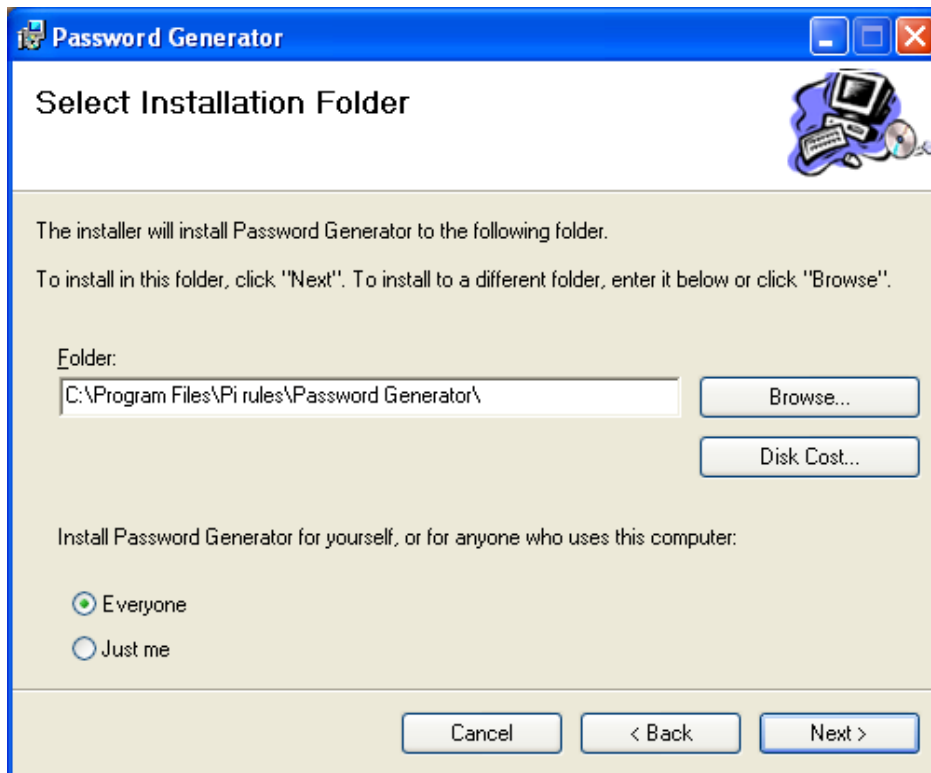
The code is essentially a password. However, you probably don't want to use the same code for every site because if somebody knows that you use this program, the passwords are only as secure as long as the identifier and code are secret. Instead, you might want to modify your normal password in some way with each site. For a simple example, count the number of vowels in the site identifier and add that before your password. With hash functions, changing even one character makes a completely different output. Just remember how you choose the code and don't let anybody know what it is or write it down.

How do I install the program?

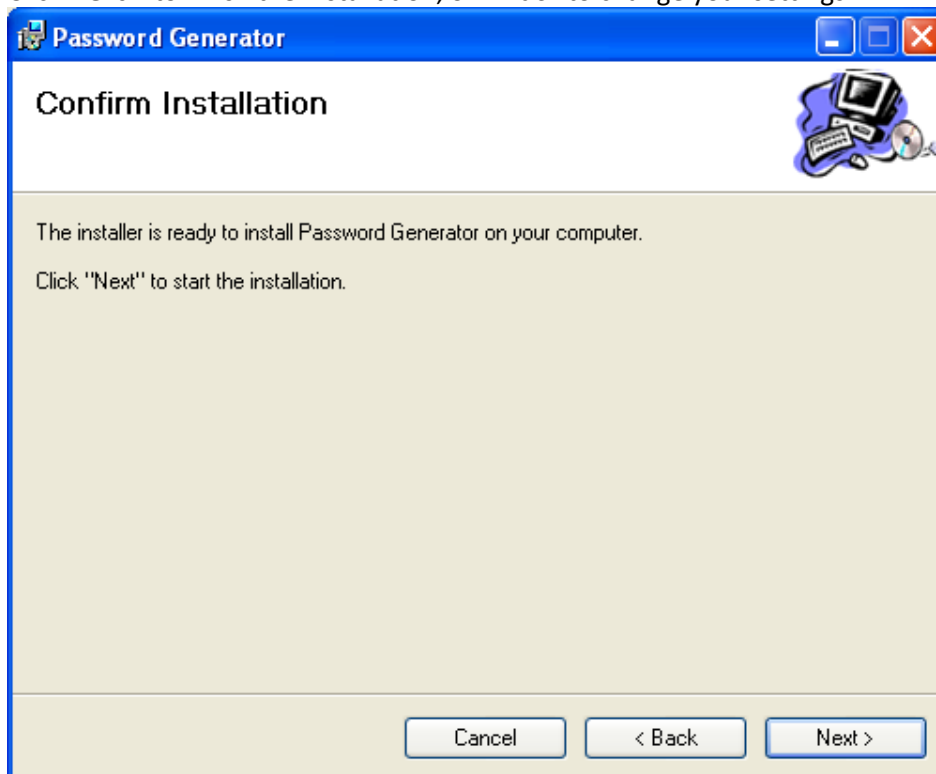
First, download the installer **Password Generator.msi** and run it.
Click **Next >** to continue



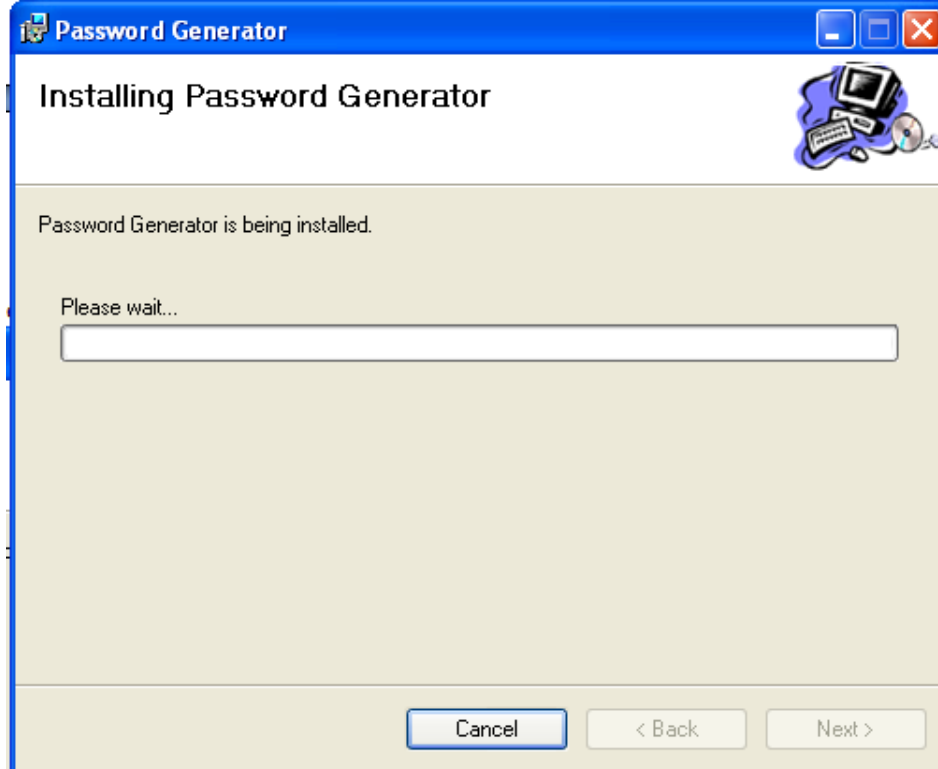
Choose the folder where you would like the program to install and if you would like the program to install for everybody on your computer or just for you. Click **Next >** to continue



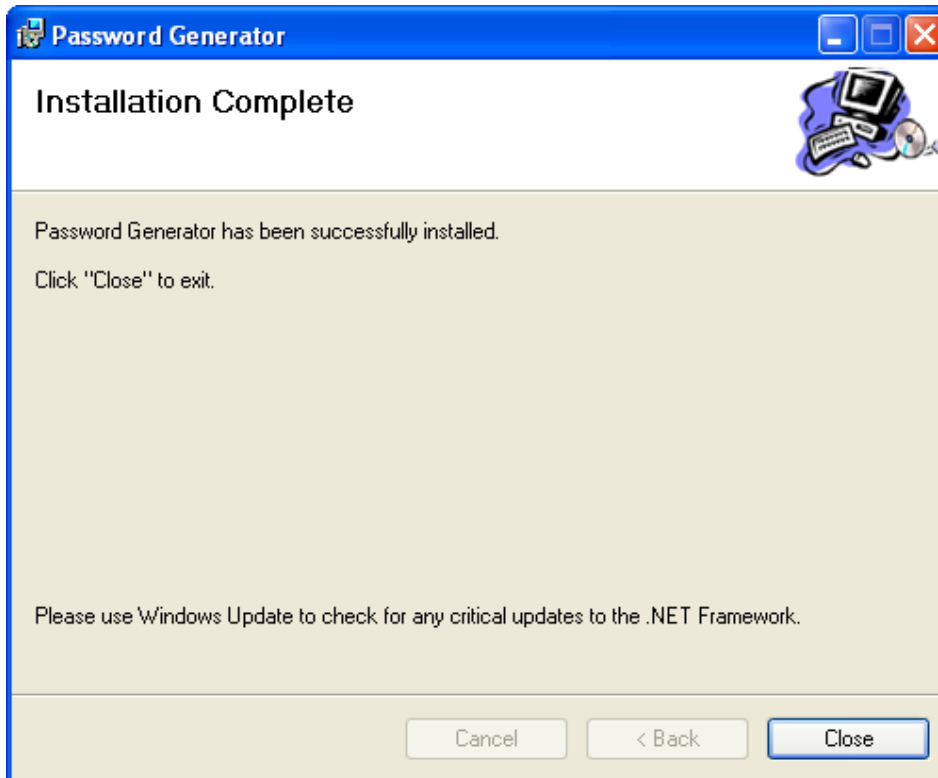
Click **Next >** to finish the installation, or **< Back** to change your settings



Wait for the installation to complete



Click **Close** when it is finished to exit the installation.



Using the program

You can access the program either through the desktop shortcut (Password Generator) or through the Start Menu under the "Password Generator" program group. The instructions and readme are located in the Start Menu.

1. Use the hints for creating an identifier for the site and a code.
2. Click on "Generate Password" when ready
3. Paste the password into the password field on the online form

Advanced Features

The program has a few advanced features for more technical users. To see these, check "Show Advanced Options." You can choose the hash function from MD5 (default), SHA-1, SHA-256, SHA-512, and RIPEMD-160 as well as the number of characters in the generated password from 8 to 32 characters (16 default), although MD5 and RIPEMD-160 can only create up to 16 characters for the password. You can also choose a text file to use instead of the code, but the file *must not change* or the generated password will change.



Advanced Features



Available Hash Functions



Available number of characters in password